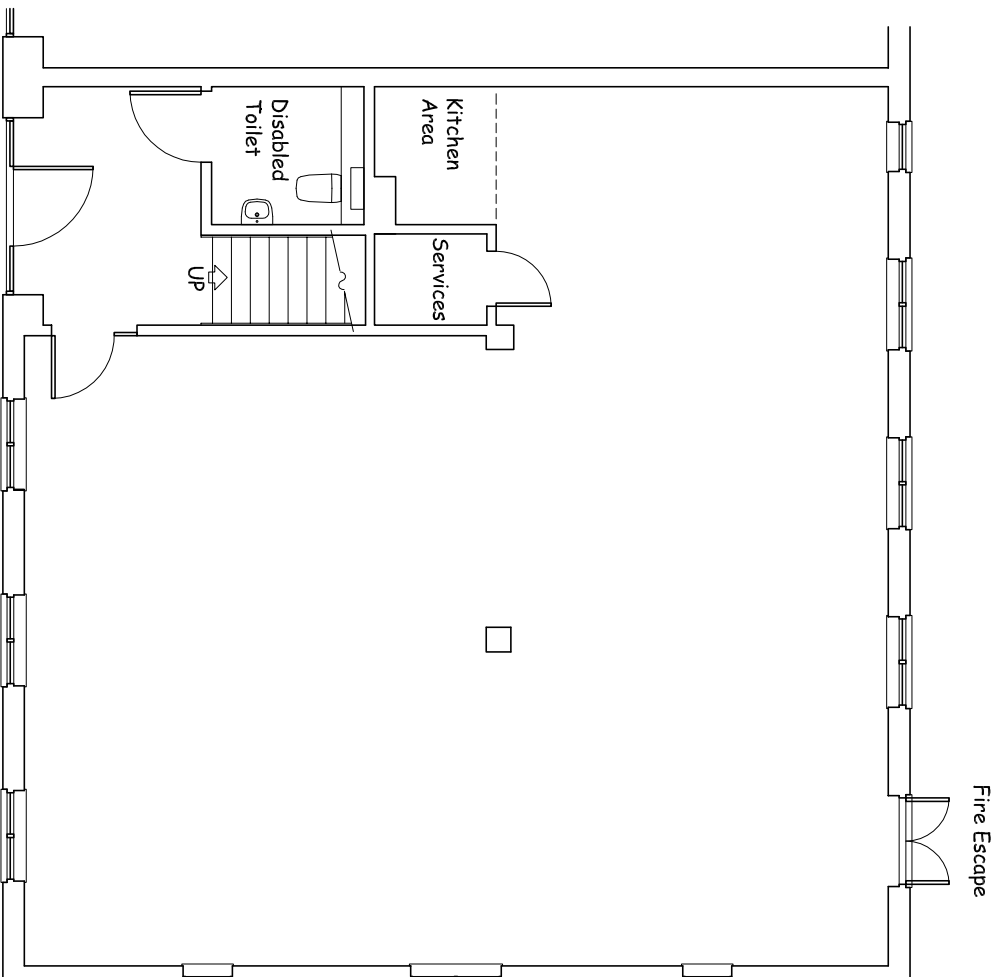


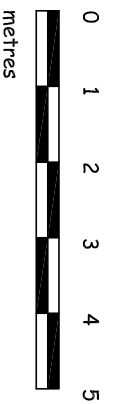
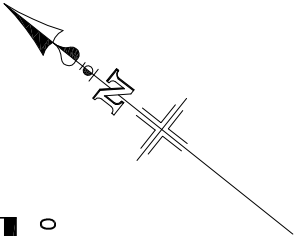
NOTES:

- 2655mm clear height to Ground Floor.
- generally suspended ceiling grid system.
- Generally carpet tile floor finish.



G R O U N D F L O O R P L A N

A4 DRAWING at: 1/100 SCALE



**SOUTH WING, MONTROSE HOUSE,
CHERTSEY BOULEVARD,
HANWORTH BUSINESS PARK, CHERTSEY,
SURREY, KT16 9JX**

GROUND FLOOR PLAN

SCALE: 1:100 DATE: August 2006