

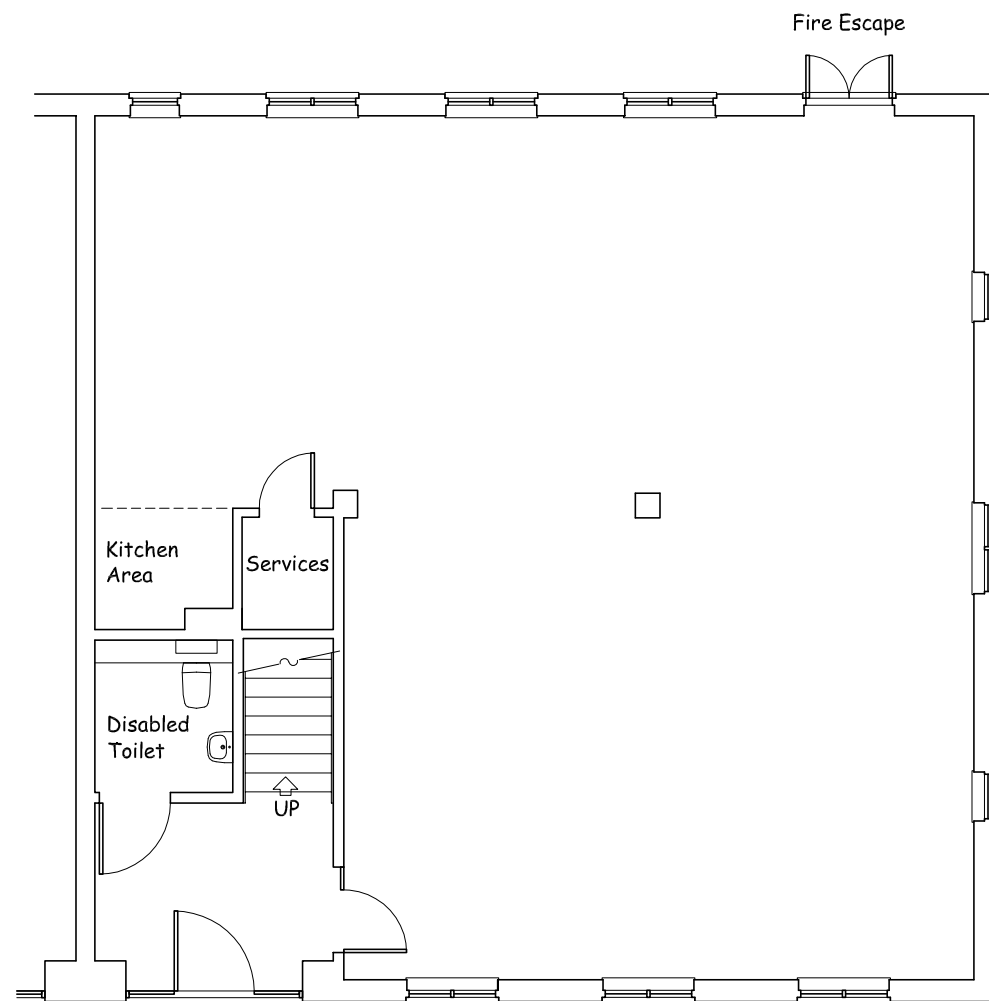
NOTES:

2655mm clear height to Ground Floor.

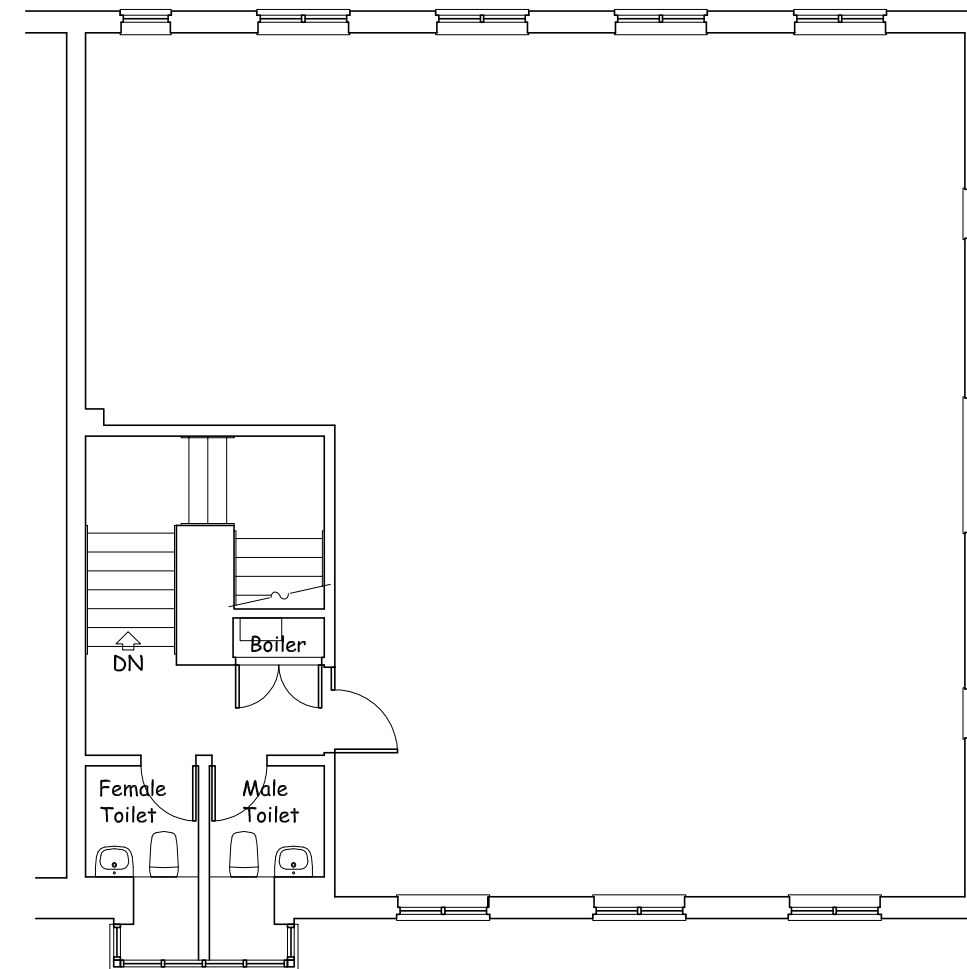
2614mm clear height to First Floor.

generally suspended ceiling grid system.

Generally carpet tile floor finish.

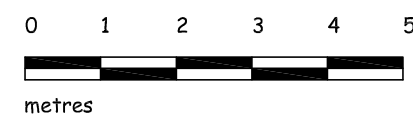
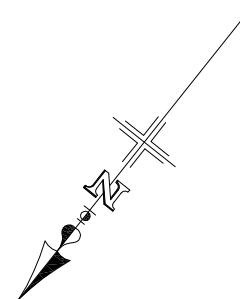


GROUND FLOOR PLAN



FIRST FLOOR PLAN

A3 DRAWING at: 1/100 SCALE



SOUTH WING, MONTROSE HOUSE,
CHERTSEY BOULEVARD,
HANWORTH BUSINESS PARK, CHERTSEY,
SURREY, KT16 9JX

EXISTING FLOOR PLANS

SCALE: 1:100 DATE: August 2006