

AXIS

CLEEVE ROAD, LEATHERHEAD, SURREY

AVAILABLE FOR SALE OR TO LET



SELF CONTAINED BUSINESS UNITS FROM 4,975–9,950 SQ FT
[462–924 SQ M]



bournelodge
developments

in partnership with

FROGMORE
PROPERTY COMPANY LTD

The AXIS Centre comprises three existing business units constructed approximately 15 years ago.

Unit 1141 forms part of the Axis Centre and comprises a two storey business unit with brick and glazed elevations under a pitched roof.

Internally, the unit comprises fully fitted first floor accommodation with the ground floor left in a shell format ready for fit-out. The unit is capable of being upgraded to a full B1 office standard, if required, including air conditioning.

The unit has the benefit of generous car parking provision. The unit has been fully refurbished and is available for immediate occupation.

Accommodation

As currently laid out the premises provide gross internal accommodation of 4,795–9,950 sq ft (462–924 sq m).

Amenities

The premises offer the following amenities:

- Generous parking.
- Capability for subdivision on a vertical or horizontal basis.
- Kitchen facilities.
- Suspended ceilings with integral lighting.
- Fully refurbished.
- Dual entrance areas front and back.
- Ground floor loading facilities.
- Landscaped grounds.
- Male, female and disabled toilet facilities to both front and rear parts of the building.

Tenure

Available for sale or to let.

Price/Rent

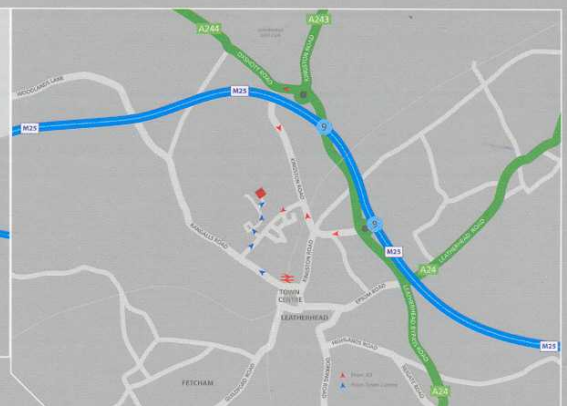
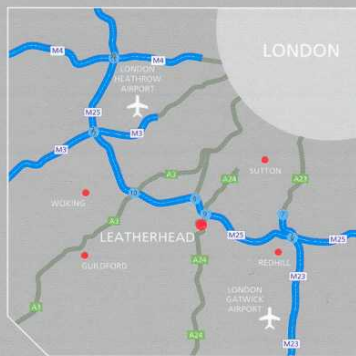
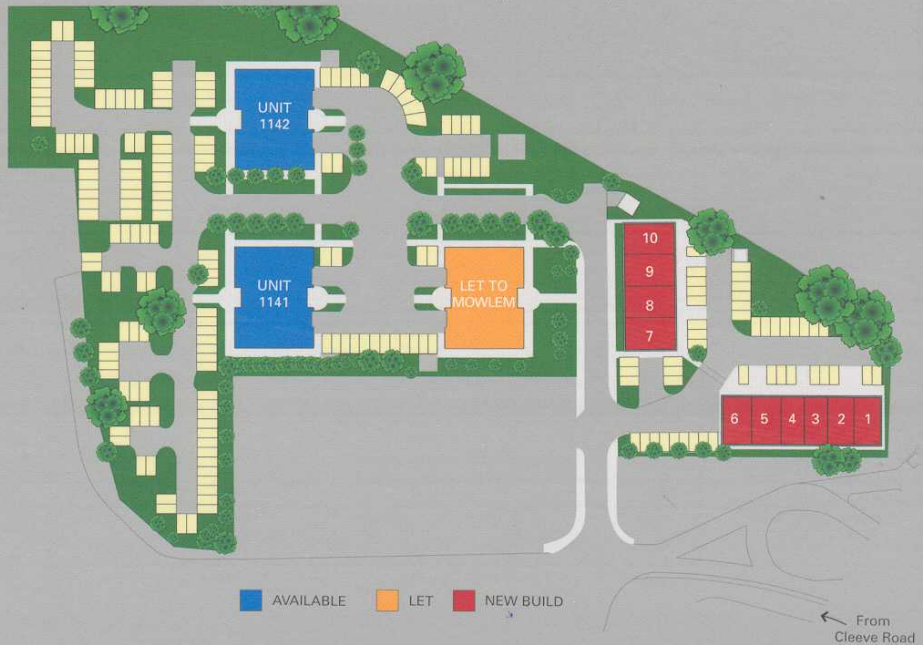
Full details on request.

Viewing

For further information contact the joint selling agents.

Location

The AXIS Centre is situated approximately one mile from Leatherhead Town Centre, within walking distance of the main line railway station. There are frequent train services to London Waterloo, Victoria and London Bridge. There are excellent road links with the M25 (J9) approximately 1 mile.



www.axisleatherhead.co.uk



Will Foster

T: 020 7861 1293 • F: 020 7495 0925
will.foster@knightfrank.com



Nick Smith

T: 01372 360190 • F: 01372 360211
nick@hurstwarne.co.uk