

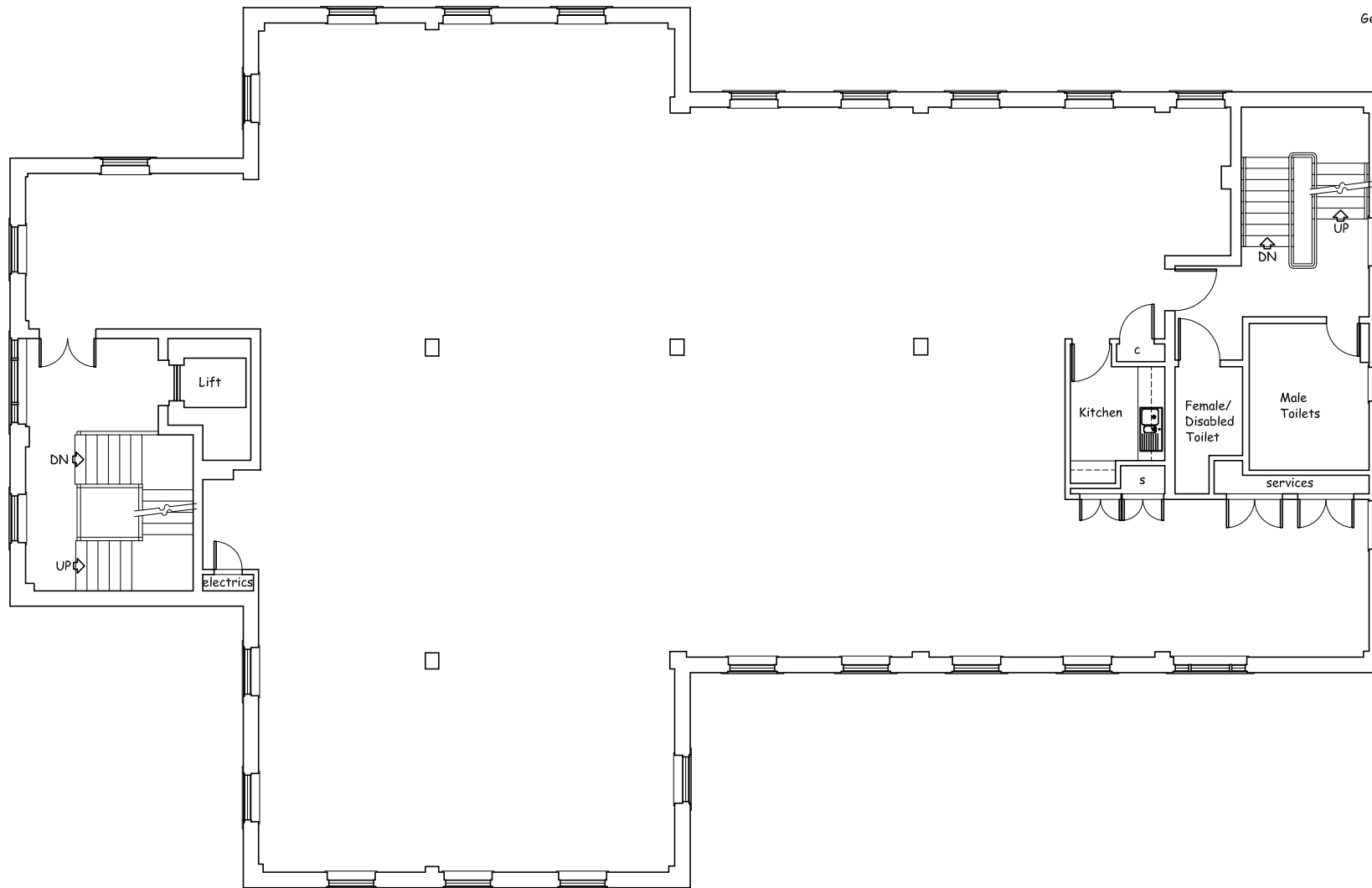
**NOTES:**

150mm raised floor system.

2580mm clear height.

generally suspended ceiling grid runs over tops of partitions.

Generally carpet tile floor finish.



**S E C O N D   F L O O R   P L A N**

MELITA HOUSE, 124 BRIDGE ROAD,  
CHERTSEY, KT16 8LZ

**SECOND FLOOR PLAN**

SCALE: 1:100   DATE: March 2006

