

**NOTES:**

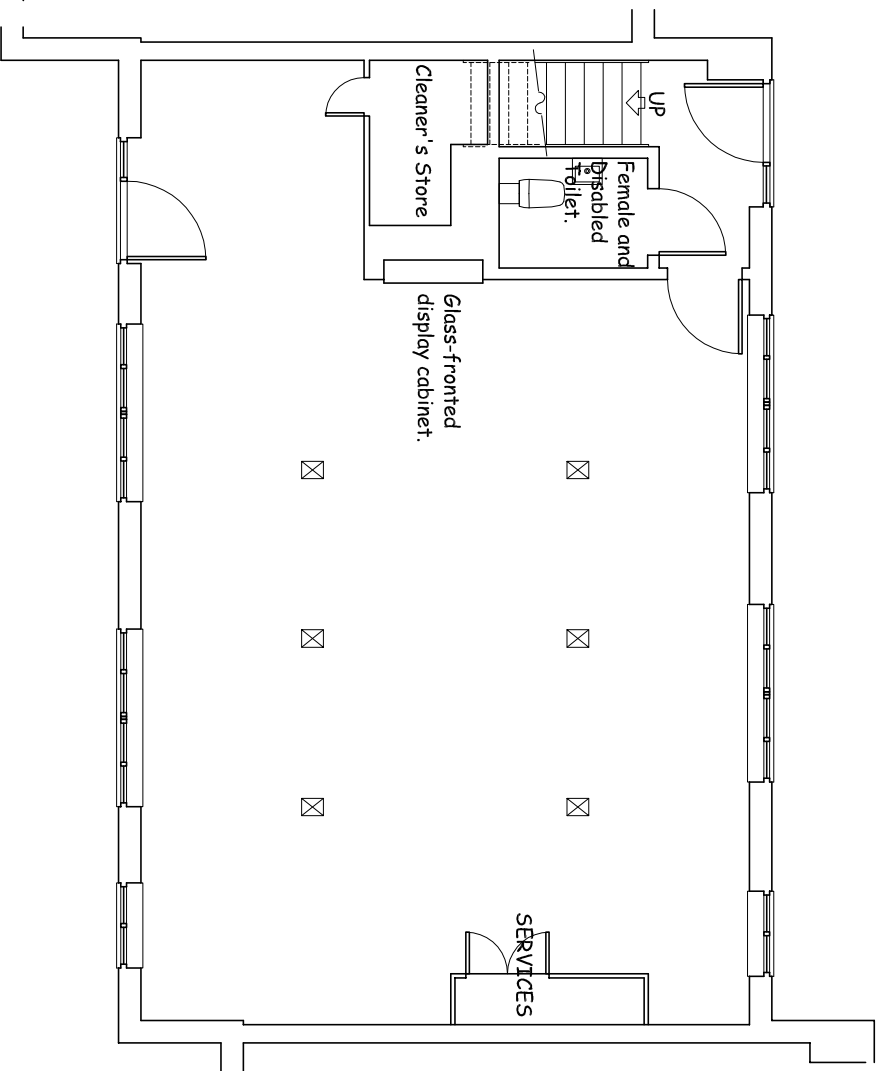
2395mm clear height to Ground Floor.

2425mm clear height to First Floor.

Generally suspended ceiling grid system.

Generally carpet tile floor finish.

☒ Power outlet floor boxes.



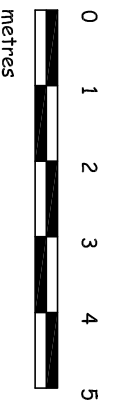
**UNIT 2**

**A4 DRAWING at: 1/100 SCALE**



**UNITS 1, 2, and 3, TRINITY PLACE,  
29 THAMES STREET, WEYBRIDGE, SURREY,  
KT13 8JG**

**GROUND FLOOR PLAN - UNIT 2**



**SCALE: 1:100 DATE: August 2006**